



◀ BACK HOME



VISION PLUS 55 AC

This monthly lens has been available since many years on the market with very good results in fitting and customer loyalty.

The lens combines excellent material and special aspheric geometry able to correct both spheric aberrations and higher order aberrations of the human eye.



HIGH DEFINITION SYSTEM

Differently from other aspheric lenses on the market, the high definition design of this lens combines the ideal aspheric curving for each power with the lens thickness and compensates for the visual aberration caused by the lens flexure on the eye surface. This means a better visual acuity from all distances, a larger depth of field and a reduction of refractive astigmatism, improving the contrast sensitivity and giving a sharper and clearer vision.

ADVANTAGES

- Generic white box with private label sticker
- Available in stock
- Flexible MOQ conditions
- Constant and long lasting presence on the market
- Aspherical geometry with visual aberration control
- Higher visual acuity and enhanced contrast sensitivity
- Easy handling, superb comfort

UV
FILTER

TECHNICAL FILE

Material	Methafilcon A
Water content	55%
Geometry	Aspheric
Base curve	8,60 mm
Diameter	14,20 mm
Central thickness	0,08 mm (at -3,00 Dt)
Handling tint	blue

POWER RANGE

-20.00 Dt ~ +12.00 Dt
from -20.00 to -6.50 (0.50 step)
from -6.00 to +4.00 (0.25 step)
from +4.50 to +12.00 (0.50 step)

PACKAGING OPTIONS

**BOX OF 6
CONTACT LENSES**

PRODUCT CODE

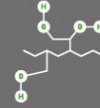
A01



◀ BACK HOME

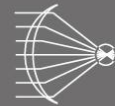


VISION PLUS 55 BIO



AUGMENTED BIOCOMPATIBILITY

The materials that contain glycol methacrylate showed an improvement of internal water retention with a low percentage of dehydration and a high rate of rehydration. Moreover, this material is particularly resistant to surface deposits and insensitive to pH variations. This polymer is made up by free radicals of hydrogen that naturally attract water molecules ensuring longer and more wettability and lubrication to the lens.



HIGH DEFINITION SYSTEM

Differently from other aspheric lenses in the market, the high definition design of this lens combines the ideal aspheric curving for each power with the lens thickness and compensates for the visual aberration caused by the lens flexure on the eye surface. This means a better visual acuity from all distances, a larger depth of field and a reduction of refractive astigmatism, improving the contrast sensitivity and giving a sharper and clearer vision.

ADVANTAGES

- **Generic white box with private label sticker**
- **Available in stock**
- **Flexible MOQ conditions**
- Exceptional comfort and perfect fitting
- Aspherical geometry with visual aberration control
- Higher visual acuity and enhanced contrast sensitivity
- Lenses immersed in a buffer saline solution with hyaluronic acid with wetting and lubricating properties, especially during the first hours of wear

UV
FILTER

TECHNICAL FILE

Material	Hioxifilcon (Hema+GMMA)
Water content	55%
Geometry	Aspheric
Base curve	8,60 / 8.90 mm
Diameter	14,20 mm
Central thickness	0,10 mm (at -3,00 Dt)
Handling tint	blue

POWER RANGE

-20.00 Dt ~ +10.00 Dt
from -20.00 to -6.50 (0.50 step)
from -6.00 to +6.00 (0.25 step)
from +6.50 to +10.00 (0.50 step)

PACKAGING OPTIONS

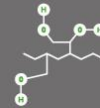
**BOX OF 3 or 6
CONTACT LENSES**

PRODUCT CODE

**A03 / A42
A04 / A43**



DAY VUE 58 BIO



AUGMENTED BIOCOMPATIBILITY

The materials that contain glycol methacrylate showed an improvement of internal water retention with a low percentage of dehydration and a high rate of rehydration. Moreover, this material is particularly resistant to surface deposits and insensitive to pH variations. This polymer is made up by free radicals of hydrogen that naturally attract water molecules ensuring longer and more wettability and lubrication to the lens.



HIGH DEFINITION SYSTEM

Differently from other aspheric lenses in the market, the high definition design of this lens combines the ideal aspheric curving for each power with the lens thickness and compensates for the visual aberration caused by the lens flexure on the eye surface. This means a better visual acuity from all distances, a larger depth of field and a reduction of refractive astigmatism, improving the contrast sensitivity and giving a sharper and clearer vision.

ADVANTAGES

- **Generic white box with private label sticker**
- **Available in stock**
- **Flexible MOQ conditions**
- Reduction of effects caused by dry eye symptoms
- Aspherical geometry with visual aberration control
- Exceptional comfort and perfect fitting
- Higher visual acuity and enhanced contrast sensitivity
- Lenses immersed in a buffer saline solution with hyaluronic acid with wetting and lubricating properties, especially during the first hours of wear



TECHNICAL FILE

Material	Hioxifilcon (Hema+GMMA)
Water content	58%
Geometry	Aspheric
Base curve	8,60 mm
Diameter	14,20 mm
Central thickness	0,092 mm (at -3,00 Dt)
Handling tint	blue

POWER RANGE

-12.00 Dt ~ +6.00 Dt
 from -12.00 to -6.50 (0.50 step)
 from -6.00 to +6.00 (0.25 step)

PACKAGING OPTIONS

**BOX OF 30 DAILY
CONTACT LENSES**

PRODUCT CODE

A05



◀ BACK HOME



VISION PLUS 55 SH

LATEST TECHNOLOGIES
FOR AN OPTIMUM
ALL DAY LONG HYDRATION

Sodium hyaluronate is a natural, biocompatible and highly viscous molecule with excellent wetting and lubricant properties. While manufacturing the VisionPlus 55SH lenses, this component is added to the HEMA and the other raw materials before the moulding step. In this way a new chemical structure is obtained and sodium hyaluronate will not be released outside the lens, with sensible gain of comfort and wettability. This innovative and unique technology differs from other technologies that add sodium hyaluronate only during the hydration process.

ADVANTAGES

- Generic white box with private label sticker
- Available in stock
- Flexible MOQ conditions
- Unique contact lens material containing sodium hyaluronate already before the moulding step
- Innovative and unique technology
- High definition vision
- Aspheric geometry allowing full aberration control with improved visual acuity at all distances, for a sharper and clearer vision
- UV absorber
- No loss of comfort and wettability, as sodium hyaluronate is part of the new chemical structure of the raw material of the lens



TECHNICAL FILE

Material	Bioxifilcon B
Water content	55%
Geometry	Aspheric
Base curve	8,60 mm
Diameter	14,20 mm
Central thickness	0,10 mm (at -3,00 Dt)

POWER RANGE

-15.00 Dt ~ +10.00 Dt
from +10.00 to +6.50 (0.50 step)
from +6.00 to -6.00 (0.25 step)
from -6.50 to -6.00 (in 0.50 step)

PACKAGING OPTIONS

**BOX OF 3
CONTACT LENSES**

PRODUCT CODE

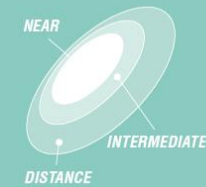
A07



◀ BACK HOME



VISION PLUS 55 MULTI



HIGH DEFINITION SYSTEM

Differently from other aspheric lenses on the market, the high definition design of this lens combines the ideal aspheric curving for each power with the lens thickness and compensates for the visual aberration caused by the lens flexure on the eye surface. This means a better visual acuity from all distances, a larger depth of field and a reduction of refractive astigmatism, improving the contrast sensitivity and giving a sharper and clearer vision.

ADVANTAGES

- Generic white box with private label sticker
- Available in stock
- Flexible MOQ conditions
- Constant and long lasting presence on the market
- Aspherical geometry with visual aberration control
- Higher visual acuity and enhanced contrast sensitivity
- Easy handling, superb comfort

TECHNICAL FILE

Material	Methafilcon A
Water content	55%
Geometry	Aspheric
Base curve	8,70 mm
Diameter	14,20 mm
Central thickness	0,12 mm (at -3,00 Dt)
Handling tint	blue
Effective addiction	+1.50 (covering from +1.25 to +2.25)

POWER RANGE

-10.00 Dt ~ +6.00 Dt
from -10.00 to -6.50 (0.50 step)
from -6.00 to +6.00 (0.25 step)

PACKAGING OPTIONS

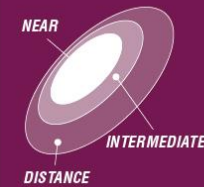
**BOX OF 3
CONTACT LENSES**

PRODUCT CODE

A31



HYDROSI 70 MULTI



HIGH DEFINITION SYSTEM

Differently from other aspheric lenses on the market, the high definition design of this lens combines the ideal aspheric curving for each power with the lens thickness and compensates for the visual aberration caused by the lens flexure on the eye surface. This means a better visual acuity from all distances, a larger depth of field and a reduction of refractive astigmatism, improving the contrast sensitivity and giving a sharper and clearer vision.

ADVANTAGES

- Generic white box with private label sticker
- Available in stock
- Flexible MOQ conditions
- Low water content to prevent dry eye and surface deposits
- High oxygen transmissibility
- Lower modulus for a soft and comfortable lens

TECHNICAL FILE

Material	Innofilcon A
Water content	45%
Geometry	Aspheric
Base curve	8,60 mm
Diameter	14,20 mm
Central thickness	0,12 mm (at -3,00 Dt)
Handling tint	blue
Dk	88
Dk/t	73
Modulus	0,8 Mpa
Effective addition	+1.00, +1.50, +2.00, +2.50

POWER RANGE

-12.00 Dt ~ +6.00 Dt
 from -12.00 to -6.50 (0.50 step)
 from -6.00 to +5.00 (0.25 step)
 from +5.50 to +6.00 (0.50 step)

PACKAGING OPTIONS

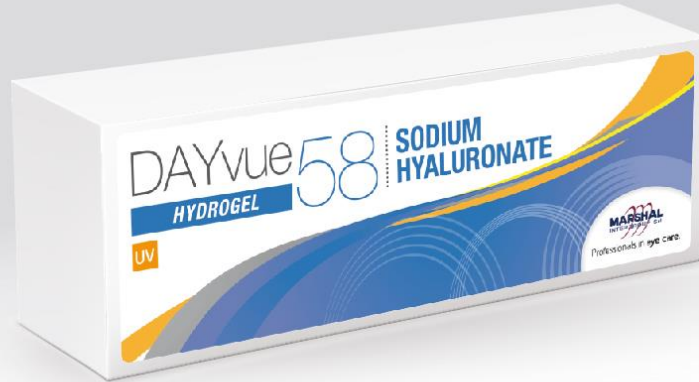
**BOX OF 6
CONTACT LENSES**

PRODUCT CODE

A32



◀ BACK HOME



▶ PLAY VIDEO

DAYVUE 58 SH



SODIUM HYALURONATE

Unlike other contact lenses already in the market, that are using sodium hyaluronate only in the saline solution where the lenses are immersed, this new lenses special formula let the

Sodium Hyaluronate combine with the material of the lens during its hydration and stick to it permanently. In this way, the Sodium Hyaluronate works as a powerful wetting agent all along the wearing cycle not being "released" as a lubricant, but acting continuously to keep the surface of the lens as wet as it should be from the first minute to the last

ADVANTAGES

- Generic white box with private label sticker
- Available in stock
- Flexible MOQ conditions
- Soft material high wearability
- The presence of hyaluronic acid linked to the polymer matrix allows prolonged portability and high quality performance throughout the day
- Better water retention capacity than all hydrogel materials
- High comfort and effective action against dry eye syndrome
- Excellent wetting angle

UV
FILTER

TECHNICAL FILE

Material	Etafilcon A
Water content	58%
Geometry	Aspheric
Base curve	8,70 mm
Diameter	14,20 mm
Central thickness	0,08 mm (at -3,00 Dt)
Handling tint	blue

POWER RANGE

-12.00 Dt ~ +6.00 Dt
 from -10.00 to -6.50 (0.50 step)
 from -6.00 to +4.00 (0.25 step)
 from +4.50 to +6.00 (0.50 step)

PACKAGING OPTIONS

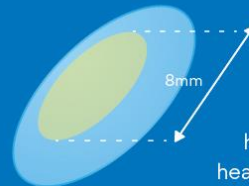
**BOX OF 30
CONTACT LENSES**

PRODUCT CODE

B02



BLUE STOP



HARMFUL BLUE LIGHT

Common electronic devices emit high-energy blue-violet visible light with wavelengths ranging from 380 nanometres (nm) to 450 nanometres (nm).

Such emissions can have long- and short-term harmful effects on the eyes such as fatigue and headache or even cause macular degeneration. Blue light passes through the LENS and can adversely affect the retinal epithelial cells (Macular degeneration, fatigue, decreased visual acuity, etc.)

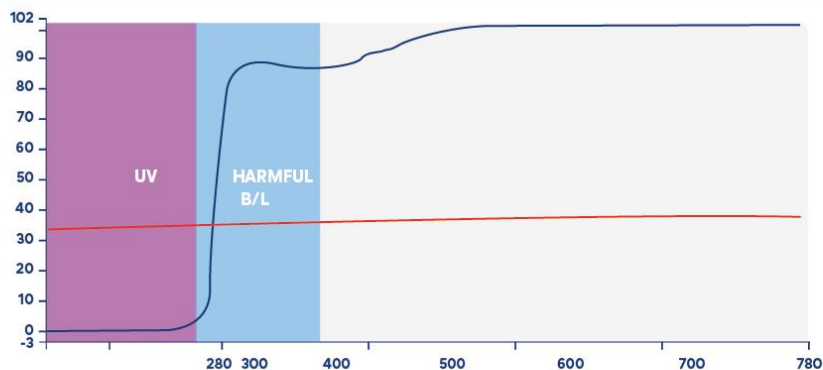
BLUESTOP: A NEW CONTACT LENS

The core technology is based on an insertion of a functional yellow blue light blocking filter polymerized only in optical zone.

The optimum optical part printing-8mm outer diameter:

- Cover the maximum size of pupil (in darkness)
- Keeps esthetic impression by having colored area smaller than the iris.

YELLOW FILTER CHARACTERISTICS



Blue light blocking rate 16% (380~450nm base) / Visible light transmittance >90% / Enhanced UV protection

TECHNICAL FILE

Material	Methafilcon A
Water content	55%
Geometry	Spheric
Base curve	8,60 mm
Diameter	14,20 mm
Central thickness	0,08 mm (at -3,00 Dt)
Blu rays absorption	16%
Light transmittance	90%
Optic filter diameter	8 mm

POWER RANGE

-12.00 Dt ~ 0.00 Dt

from -12.00 to 0.00 (0.25 step)

PACKAGING OPTIONS

**BOX OF 10 DAILY
CONTACT LENSES**

PRODUCT CODE



◀ BACK HOME



VISION PLUS 58 AC

THE RIGHT FEATURES
FOR AN EXTREMELY
COMFORTABLE CONTACT LENS

Vision Plus 58AC contact lenses are produced using a very well known material, tested in the market for many years. The lenses are designed with a special geometry that allows aberration control, improving visual acuity, increasing the contrast sensitivity and making a clearer vision. In addition, the comfort of the lens is guaranteed by the special edge design, by the average water content and by the reduced central thickness. Vision Plus 58AC are hydrated in tank and then immersed in buffered saline solution with hyaluronic acid in order to increase the wettability.

ADVANTAGES

- Generic white box with private label sticker
- Available in stock
- Flexible MOQ conditions
- Produced with aspheric geometry allowing aberration control
- Immersed in buffered saline solution with hyaluronic acid
- Each lens undergoes five steps of quality control during the production
- Hydrated in the tank and not in blister pack
- COS - Curve Orientation System: a computerized system able to ensure that the lens in the blister is always correctly oriented for the fitting



TECHNICAL FILE

Material	Etafilcon A
Water content	58%
Geometry	Aspheric
Base curve	8,50 mm
Diameter	14,20 mm
Central thickness	0,08 mm (at -3,00 Dt)

POWER RANGE

-12.00Dt ~ +4.00 Dt
from -0.50 to -6.00 (0.25 step)
from +0.50 to +4.00 (0.25 step)
from -6.00 to -12.00 (0.50 step)

PACKAGING OPTIONS

**BOX OF 3
CONTACT LENSES**

PRODUCT CODE

C01



VISION PLUS 38 AC

THE RIGHT FEATURES
FOR AN EXTREMELY
COMFORTABLE CONTACT LENS

Vision Plus 38AC contact lenses are designed with a special geometry that allows aberration control, improving visual acuity, increasing the contrast sensitivity and making a clearer vision. In addition, the comfort of the lens is guaranteed by the special edge design, by the average water content and by the reduced central thickness. Vision Plus 38AC are hydrated in tank and then immersed in buffered saline solution with hyaluronic acid in order to increase the wettability.

ADVANTAGES

- **Generic white box with private label sticker**
- **Available in stock**
- **Flexible MOQ conditions**
- Produced with aspheric geometry allowing aberration control
- Immersed in buffered saline solution with hyaluronic acid
- Each lens undergoes five steps of quality control during the production
- Hydrated in the tank and not in blister pack
- COS - Curve Orientation System: a computerized system able to ensure that the lens in the blister is always correctly oriented for the fitting



TECHNICAL FILE

Material	Polymacon
Water content	38%
Geometry	Aspheric
Base curve	8,60 mm
Diameter	14,00 mm
Central thickness	0,08 mm (at -3,00 Dt)

POWER RANGE

-12.00 Dt ~ 0.00 Dt
from -0.50 to -6.00 (0.25 step)
from -6.00 to -12.00 (0.50 step)

PACKAGING OPTIONS

**BOX OF 3
CONTACT LENSES**

PRODUCT CODE

C02



◀ BACK HOME



ELLE 6

DAILY CONTACT LENSES
WITH 3 WETTING AGENTS
AND 3 VITAMINS

Many contact lens wearers are subject to dry eye syndrome, due to various biological and climate factors. In female wearers, pregnancy, breast feeding, menstrual period and menopause, can cause or exacerbate dryness of the tear film.

Elle6 is the daily lens created for those who need extra help for lubricating and moisturize their eye, as it is immersed in buffered saline solution containing of 3 wetting agents and 3 vitamins specific for eye diseases.

ADVANTAGES

WETTING AGENTS

TWEEN 80 (Polysorbate 80) is a surfactant of vegetable origin. It is used as emulsifier in pharmaceutical, cosmetic and food industries.

PEG (polyethylene glycol) is a polymer used in pharmaceutical field for the preparation of topical and ophthalmic ointments and emulsions.

HA (hyaluronic acid) is widely used in ophthalmic industry as it increases water retention and improves the lubrication of the eye.

VITAMINS

Vitamin B6 aids the proper absorption of magnesium, necessary to the human body for tear production.

Vitamin B12 is present in many eye drops formulations and is one of the main components of dietary supplements for the eye well-being.

Vitamin E is an excellent antioxidant and it has proven functions of nutrition and protection of the lipids of cell membranes.

TECHNICAL FILE

Material	Etafilcon A
Water content	58%
Geometry	Aspheric
Base curve	8,50 mm
Diameter	14,20 mm
Central thickness	0,08 mm (at -3,00 Dt)

POWER RANGE

-12.00 Dt ~ +4.00 Dt
from -12.00 to -6.50 (0.50 step)
from -6.00 to +4.00 (0.25 step)

PACKAGING OPTIONS

**BOX OF 30
CONTACT LENSES**

PRODUCT CODE

C08

CLEAR / COLOR CONVENTIONAL

SOFT CONTACT LENSES



CLEAR CONVENTIONAL TECHNICAL FILE

Material	Hema Polymacon
Water content	38%
Geometry	Aspheric
Base curve	8,60 mm
Diameter	14,00 mm
Central thickness	0,07mm (at -3,00 Dt)
Handling tint	light blue

POWER RANGE

+6.00 Dt ~ -12.00 Dt
 from -6.00 to -12.00 (0.50 step)
 from +6.00 to -6.00 (0.25 step)

PACKAGING OPTIONS

VIAL

PRODUCT CODE

A15

COLOR CONVENTIONAL TECHNICAL FILE

Material	Hema Polymacon
Water content	38%
Geometry	Aspheric
Base curve	8,60 mm
Diameter	14,00 mm
Central thickness	0,08 mm (at -3,00 Dt)
Colors	blue, green, pearl, hazel, violet

POWER RANGE

0.00 Dt ~ -10.00 Dt
 from -6.00 to -10.00 (0.50 step)
 from 0.00 to -6.00 (0.25 step)

PACKAGING OPTIONS

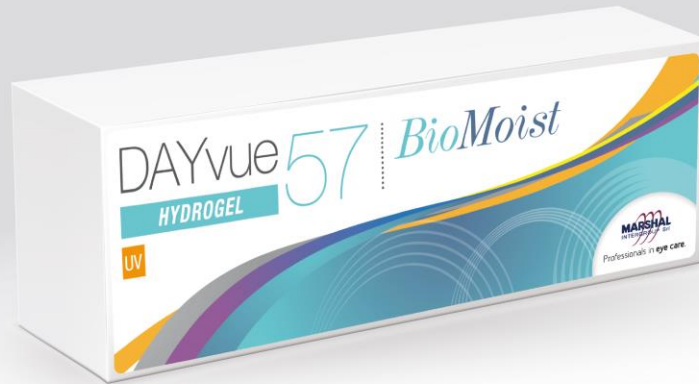
VIAL

PRODUCT CODE

A34 / A16



◀ BACK HOME



DAYVUE 57 *BioMoist*



BIOMOIST FORMULA

The BioMoist formula is a hydrating solution containing hydroxypropyl methylcellulose (HPMC) and polyethylene glycol (PEG), which together mimics the natural tear film of the eye. The combination of these superior wetting agents provides a soft, silky feel which helps to optimise comfort upon initial insertion of the lens. The specially formulated BioMoist solution releases moisture when it is needed most, resulting in superior comfort throughout the entire day.

ADVANTAGES

- Generic white box with private label sticker
- Available in stock
- Flexible MOQ conditions
- The formula BIOMOIST combine with the material of the lens during its hydration
- The lens is immersed in buffer saline solution contain BIOMOIST formula
- Improved initial comfort
- All day moisture retention
- Increased resistance to protein & lipid build up

UV
FILTER

TECHNICAL FILE

Material	Methafilcon B
Water content	57%
Base curve	8,60 mm
Diameter	14,3 0 mm
Central thickness	0,10 mm (at -3,00 Dt)
Handling tint	blue

POWER RANGE

-15.00 Dt ~ +6.00 Dt
from -15.00 to -6.50 (0.50 step)
from -6.00 to -0.50 (0.25 step)
from +0.50 to +6.00 (0.50 step)

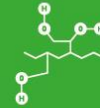
PACKAGING OPTIONS

**BOX OF 30
CONTACT LENSES**

PRODUCT CODE



VISION PLUS 55 BIO-T



AUGMENTED BIOCOMPATIBILITY

The materials that contain glycol methacrylate showed an improvement of internal water retention with a low percentage of dehydration and a high rate of rehydration. Moreover, this material is particularly resistant to surface deposits and insensitive to pH variations. This polymer is made up by free radicals of hydrogen that naturally attract water molecules ensuring longer and more wettability and lubrication to the lens.



HIGH DEFINITION SYSTEM

Differently from other aspheric lenses in the market, the high definition design of this lens combines the ideal aspheric curving for each power with the lens thickness and compensates for the visual aberration caused by the lens flexure on the eye surface. This means a better visual acuity from all distances, a larger depth of field and a reduction of refractive astigmatism, improving the contrast sensitivity and giving a sharper and clearer vision.

ADVANTAGES

- **Generic white box with private label sticker**
- **Available in stock**
- **Flexible MOQ conditions**
- Aspherical geometry with visual aberration control
- Higher visual acuity and enhanced contrast sensitivity
- Back surface toric lenses
- Longer lubrication and better wettability of the lens
- Lenses immersed in a buffer saline solution with hyaluronic acid with wetting and lubricating properties, especially during the first hours of wear



TECHNICAL FILE

Material	Hioxifilcon (Hema+GMMA)
Water content	55%
Geometry	Aspheric
Base curve	8,60 mm
Diameter	14,20 mm
Central thickness	0,11 mm (at -3,00 Dt)
Handling tint	blue
Stabilization	prism ballested design
Orientation	indicator one scribe mark at 270°
Cylinder	-0,75 -1,25 -1,75 -2,25
Axis	10° to 180° (10° steps)

POWER RANGE

-12.00 Dt ~ +6.00 Dt
 from -12.00 to -6.50 (0.50 step)
 from -6.00 to +6.00 (0.25 step)

PACKAGING OPTIONS

**BOX OF 3 or 6
CONTACT LENSES**

PRODUCT CODE

DH3 / DH6



◀ BACK HOME



HYDROSI 100-T

The cornea requires oxygen to be healthy. Silicone is a highly gas-permeable material as it allows the free flow of oxygen through the lens, avoiding the epithelium layer from possible keratitis. Lower water content prevent surface deposits from adhering to the lens surface, helping to reduce the risk of microbial infection.

Our silicone hydrogel contact lens contains itself the benefits of a very soft and hydrophilic material, a balanced water content, a low modulus and a high DK/t.



HIGH DEFINITION SYSTEM

Differently from other aspheric lenses on the market, the high definition design of this lens combines the ideal aspheric curving for each power with the lens thickness and compensates for the visual aberration caused by the lens flexure on the eye surface. This means a better visual acuity from all distances, a larger depth of field and a reduction of refractive astigmatism, improving the contrast sensitivity and giving a sharper and clearer vision.

ADVANTAGES

- Generic white box with private label sticker
- Available in stock
- Flexible MOQ conditions
- Round lens edge for better comfort
- Aspherical geometry with visual aberration control
- Low water content to prevent dry eye and surface deposits
- High oxygen transmissibility
- Lower balanced modulus for a soft and comfortable lens
- Lenses immersed in a buffer saline solution with hyaluronic acid with wetting and lubricating properties, especially during the first hours of wear

TECHNICAL FILE

Material	Innofilcon A
Water content	45%
Geometry	Aspheric
Base curve	8,60 mm
Diameter	14,20 mm
Central thickness	0,093 mm (at -3,00 Dt)
Handling tint	blue
Dk	88
Dk/t	95
Modulus	0,8 Mpa
Effective addiction	-0.75, -1.25, -1.75, -2.25

POWER RANGE

-12.00 Dt ~ +6.00 Dt
 from -12.00 to -6.50 (0.50 step)
 from -6.00 to +6.00 (0.25 step)

PACKAGING OPTIONS

**BOX OF 6
CONTACT LENSES**

PRODUCT CODE

DS6



◀ BACK HOME



HYDROSI 150

The cornea requires oxygen to be healthy. Silicone is a highly gas-permeable material as it allows the free flow of oxygen through the lens, avoiding the epithelium layer from possible keratitis. Lower water content prevent surface deposits from adhering to the lens surface, helping to reduce the risk of microbial infection.

Our silicone hydrogel contact lens contains itself the benefits of a very soft and hydrophilic material, a balanced water content, a low modulus and a high DK/t.



HIGH DEFINITION SYSTEM

Differently from other aspheric lenses on the market, the high definition design of this lens combines the ideal aspheric curving for each power with the lens thickness and compensates for the visual aberration caused by the lens flexure on the eye surface. This means a better visual acuity from all distances, a larger depth of field and a reduction of refractive astigmatism, improving the contrast sensitivity and giving a sharper and clearer vision.

ADVANTAGES

- **Generic white box with private label sticker**
- **Available in stock**
- **Flexible MOQ conditions**
- Round lens edge for better comfort
- Aspherical geometry with visual aberration control
- Low water content to prevent dry eye and surface deposits
- High oxygen transmissibility
- Lower balanced modulus for a soft and comfortable lens
- Lenses immersed in a buffer saline solution with hyaluronic acid with wetting and lubricating properties, especially during the first hours of wear

TECHNICAL FILE

Material	Innofilcon A
Water content	45%
Geometry	Aspheric
Base curve	8,60 mm
Diameter	14,20 mm
Central thickness	0,06 mm (at -3,00 Dt)
Handling tint	blue
Dk	88
Dk/t	147
Modulus	0,8 Mpa

POWER RANGE

-12.00 Dt ~ +8.00 Dt
from -12.00 to -6.50 (0.50 step)
from -6.00 to +6.00 (0.25 step)
from +6.50 to +8.00 (0.50 step)

PACKAGING OPTIONS

**BOX OF 6
CONTACT LENSES**

PRODUCT CODE

HYD



VISION PLUS 55 *BioMoist*



BIOMOIST FORMULA

The BioMoist formula is a hydrating solution containing hydroxypropyl methylcellulose (HPMC) and polyethylene glycol (PEG), which together mimics the natural tear film of the eye. The combination of these superior wetting agents provides a soft, silky feel which helps to optimise comfort upon initial insertion of the lens. The specially formulated BioMoist solution releases moisture when it is needed most, resulting in superior comfort throughout the entire day.

ADVANTAGES

- Generic white box with private label sticker
- Available in stock
- Flexible MOQ conditions
- The formula BIOMOIST is combined with the material of the lens during its hydration
- The lens is immersed in buffer saline solution contain BIOMOIST formula
- Improved initial comfort
- All day moisture retention
- Increased resistance to protein & lipid build up

UV
FILTER

TECHNICAL FILE

Material	Methafilcon A
Water content	55%
Base curve	8,60 mm
Diameter	14,3 0 mm
Central thickness	0,10 mm (at -3,00 Dt)
Handling tint	blue

POWER RANGE

-15.00 Dt ~ +6.00 Dt
 from -15.00 to -6.50 (0.50 step)
 from -6.00 to -0.50 (0.25 step)
 from +0.50 to +6.00 (0.50 step)

PACKAGING OPTIONS

**BOX OF 3
CONTACT LENSES**

PRODUCT CODE
